

ASPIRE UNITED 2030 ANNUAL REPORT - 2024

Table of Contents

Executive Summary.....	3
ZIP Code Summary.....	4
Demographics Summary	4
Education	6
Education Index: Education Attainment Indicators.....	7
Root Cause Analysis: Impacts of Social Determinants of Health by Demographic Cluster	9
Income	10
Income Index: Income Attainment Indicators	11
Root Cause Analysis: Impacts of Social Determinants of Health by Demographic Cluster	12
Health	13
Health Index: Health Attainment Indicators	14
Root Cause Analysis: Impacts of Social Determinants of Health by Demographic Cluster	15
Attainment Indicators: Summarized Findings.....	16
UWMD Service Area High Priority ZIP Codes	17
Cross-Cutting Community Indicators.....	19
Cross-cutting Community Indicators: Summarized Findings	19
Equitable Communities Index.....	20
Equitable Communities Top Ten ZIP Codes: Vulnerability Clusters for Other Cross-Cutting Indicators.....	21
Household Essentials Index	23
Household Essentials Top Ten ZIP Codes: Vulnerability Clusters for Other Cross-Cutting Indicators	24
Empowered People Index	26
Empowered People Top Ten ZIP Codes: Vulnerability Clusters for Other Cross-Cutting Indicators	27

Executive Summary

This is the 2024 Aspire United 2030 annual update. It provides a comprehensive update on both the key measures and indices influencing progress toward the Aspire United 2030 goals. Our inaugural report was released in 2021, highlighting the specific measures that correspond to each of the three Aspire United 2030 focus areas—education, income, and health. We also introduced a series of cross-cutting community indices that focus on social and economic factors that have the potential to impact all Aspire United 2030 goals. We shared insights via geographic ‘hot spot’ maps, summary tables, and indicator-level specifics.

The report comprises two main sections. The first section details progress toward the Aspire United 2030 education, income, and health goals. The second section addresses the cross-cutting community indicators potentially impacting progress across all goals. It is important to note that certain tables and maps are earmarked with a data icon. This notation indicates specific data that is now available to the United Way of Metropolitan Dallas (UWMD) via an Aspire United 2030 dynamic dashboard. As the ultimate goal is to ensure that data findings and analytical insights are actionable, the development of a dynamic dashboard is a foundational approach for achieving that goal.

Importantly, this report contains detailed information on the four-county region (127 ZIP Codes) that make up the UWMD service area.

Key Insights on Aspire United 2030 Goals:

- **Education**— Third grade reading proficiency in the UWMD service area has dropped by less than 0.3%. Rockwall County experienced the greatest decrease (10%) followed by Denton County at 4%. The current projection for the Aspire United 2030 education goal is 77.53% , and a 3% or more annual increase is required to close the 20% gap over the next six years.
- **Income**— Of the 84% target, 74% of young adults in the UWMD service area earn a living wage. The recent 3.4% increase in living wages indicates progress. To close the 10% gap within the next six years, a steady annual growth of 1.5% or more would be ideal.
- **Health**—Health insurance coverage has slightly increased in the UWMD service area, except for Collin County, which saw a 0.5% increase. 83% of the population is currently insured, which is below the 96% target. Meeting the United Aspire 2030 goal will require a little more than 2% annual increase for the next 6 years.

UWMD Service Area High Priority ZIP Codes:

- 18 out of 41 UWMD service area priority ZIP Codes (all in Dallas County) are classified with very high vulnerability. Notably, two areas— 75050 in Grand Prairie and 75057 in Lewisville— have entered the very high vulnerability category for the first time since the inception of tracking by Aspire United 2030.
- Three Dallas County ZIP Codes (75217, 75224 and 75232) have improved in vulnerability for cross cutting community indices but still remain in the high-priority ZIP Codes in the UWMD area.

ZIP Code Summary

Aspire United 2030 aims to address the diverse needs of the UWMD service area, which includes Dallas, Collin, Southern Denton, and Rockwall counties. Based on the latest census data, this area now encompasses 127 ZIP Codes and approximately 4.1 million residents.

Table 1: Number of ZIP Codes in the UWMD Service Area

Year	Dallas County	Collin County	Southern Denton County	Rockwall County	Total ZIP Codes in UWMD Service Area
2020	84	29	10	4	127

Demographics Summary

The UWMD service area includes a combination of urban, suburban, and rural regions, representing a diverse mix of racial and ethnic backgrounds. We have utilized demographic clusters to better understand the impacts and challenges highlighted by both the cross-cutting indicators and the Aspire United 2030 specific attainment indicators, which influence progress toward the Aspire United 2030 goals.

Number and Percentage of ZIP Codes by Demographic Cluster

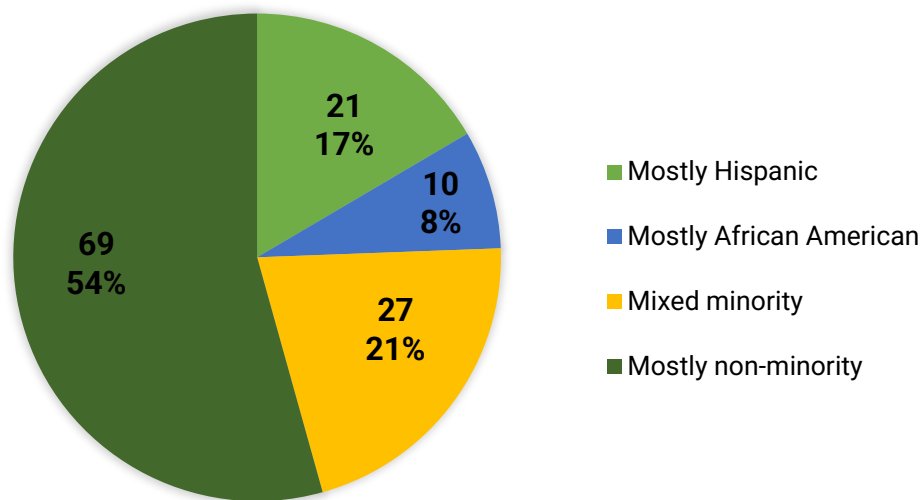


Figure 1: Number and Percentage of ZIP Codes by Demographic Cluster within the UWMD Service Area (n=127)

Table 2: Demographic Characteristics of ZIP Codes within the UWMD Service Area, by County

		Demographic Distribution of ZIP Codes by County				
		Dallas County #ZIP Codes (% ZIP Codes)	Collin County #ZIP Codes (% ZIP Codes)	Southern Denton County #ZIP Codes (% ZIP Codes)	Rockwall County #ZIP Codes (% ZIP Codes)	Total ZIP Codes in United Way Service Area #ZIP Codes (% ZIP Codes)
Demographic Clusters	Mostly Hispanic or Latino (>50%)	21	0	0	0	21 (17%)
	Mostly Black or African American (>50%)	10	0	0	0	10 (8%)
	Mixed minority (Combined >50% Hispanic/Latino and Black/African American)	25	1	1	0	27 (21%)
	Mostly non-minority (<50% Hispanic/Latino and Black/African American)	28	28	9	4	69 (54%)
	Total Zip Codes per County	84 (66%)	29 (23%)	10 (8%)	4 (3%)	127 (100%)

Table 3: Vulnerability Cluster Description and Codes for Neighborhoods defined by ZIP Codes

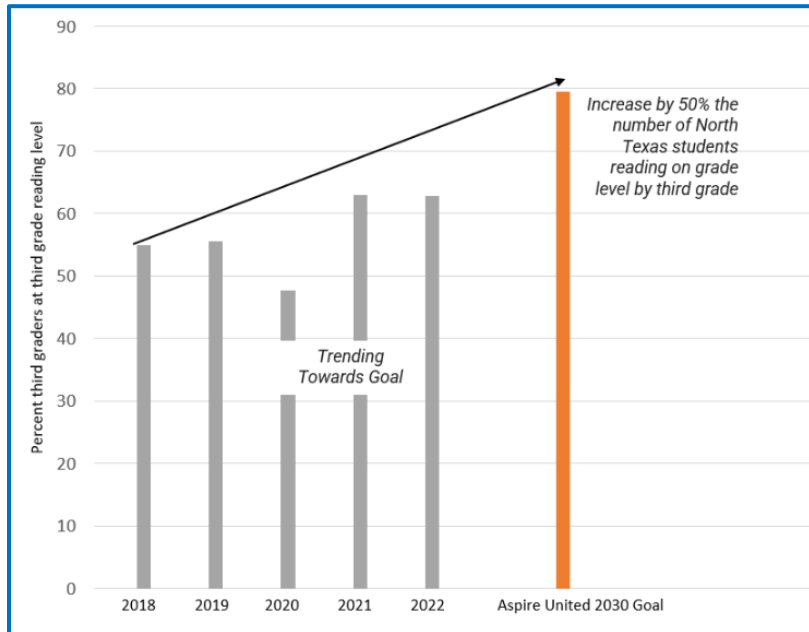
Vulnerability Cluster	Code	Description
Very High Plus	VH+	Top 10% of Neighborhoods; Represents the highest level of vulnerability requiring immediate attention to prevent severe impact.
Very High	VH	Top 20% of Neighborhood; Severe vulnerability with high risk; urgent action is advised to mitigate possible consequences.
High	H	Upper middle 20% of Neighborhood; Substantial vulnerability; timely intervention needed to minimize risk and potential impact.
Moderate	M	Middle 20% of Neighborhood; Medium risk vulnerability; recommended to address in regular maintenance cycles to prevent escalation.
Low	L	Lower Middle 20% of Neighborhood; Low-risk vulnerability; ongoing monitoring is sufficient, with resolution as resources allow.
Very Low	VL	Bottom 20% of Neighborhood; Very low risk; minimal impact expected, generally safe to address in future updates or as needed.

Education

UWMD has set an ambitious education goal: to increase by 50% the number of North Texas students reading at grade level by third grade and double the achievement rate for Black and Latinx students, aiming to close the racial achievement gap.



Key measure: Percent of third graders at third grade reading level*



Recent data from the Texas Education Agency shows a slight decrease in third grade reading proficiency in the UWMD service area, from 63.02% to 62.76% (a 0.26% drop). Notably, Rockwall County experienced a 10% decrease, potentially linked to post-pandemic adjustments. Despite setbacks, recent improvements suggest a positive shift toward pre-pandemic reading levels, with a current 2030 projection of 77.54%.

**The exclusion of 2020 test results due to COVID-19 led to using 2019 data for 2020 enrollment evaluation*

Figure 2: Change Needed in Impact Measure to Achieve the Aspire United 2030 Education Goal

Table 4: Year over Year Change (2019-2022) in Impact Measure for Aspire United 2030 Education Goal

REGION	2019*			2020*			2021			2022		
	Number of third graders enrolled	Percent of Third graders at 3 rd grade reading level	Year over Year % change	Number of third graders enrolled	Percent of Third graders at 3 rd grade reading level	Year over Year % change	Number of third graders enrolled	Percent of Third graders at 3 rd grade reading level	Year over Year % change	Number of third graders enrolled	Percent of Third graders at 3 rd grade reading level	Year over Year % change
Dallas County	33,720	52.56	+1.5%	32,227	42.95	-9.6%	31,562	58.93	+15.9%	31,022	59.69	+0.76
Rockwall County	1,681	56.63	-2.4%	1,532	59.79	+3.2%	1,688	79.92	+20.1%	1,845	69.70	-10.22
Denton County	3,660	57.16	-0.6%	3,726	56.95	-0.2%	3,697	71.19	+14.2%	3,852	67.24	-3.95
Collin County	14,351	61.75	-1.0%	14,908	55.17	-6.6%	15,169	67.6	+12.4%	15,209	66.87	-0.73
North Texas UW service area	54,980	55.59	+0.6%	54,538	47.68	-7.9%	54,274	63.02	+15.3%	53,728	62.76	-0.26
Data Source: Texas Education Agency – STAAR Scores (3 rd Grade Reading, Meets Grade Level)												

Education Index: Education Attainment Indicators

- Learning preparedness (enablers): Preschool Programming and In-school Meals
- Educational performance: Chronic absenteeism and preschool enrollment

Geographic Hot Spots: ZIP Code Analysis of Areas with Very High Vulnerability for Education Index

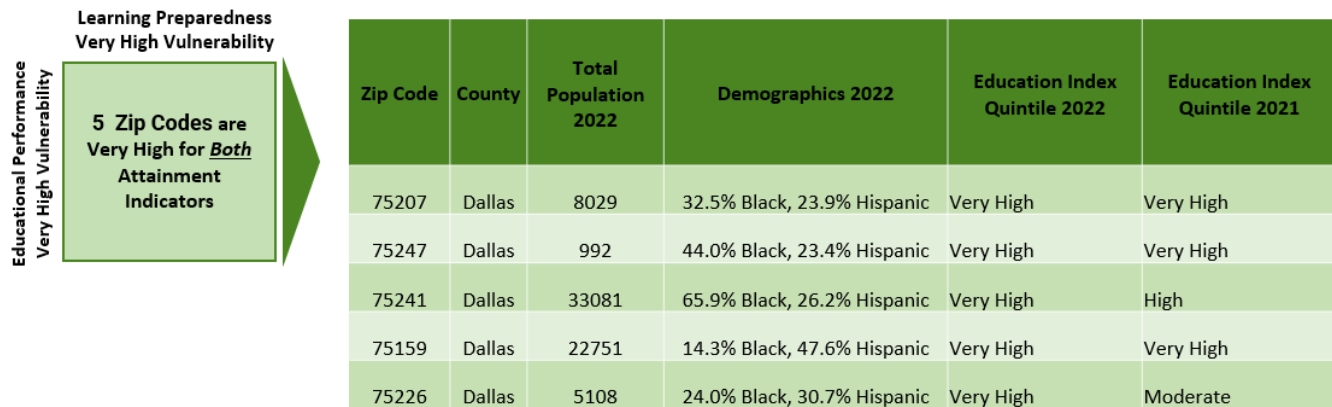
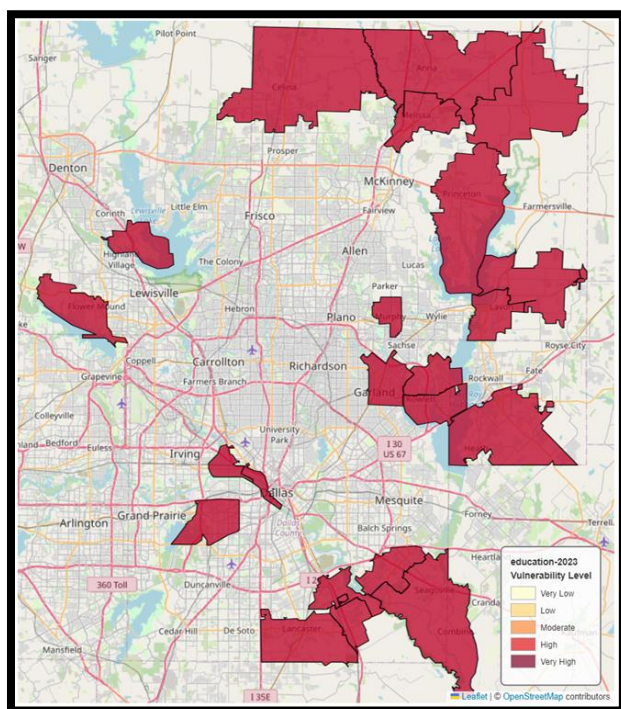


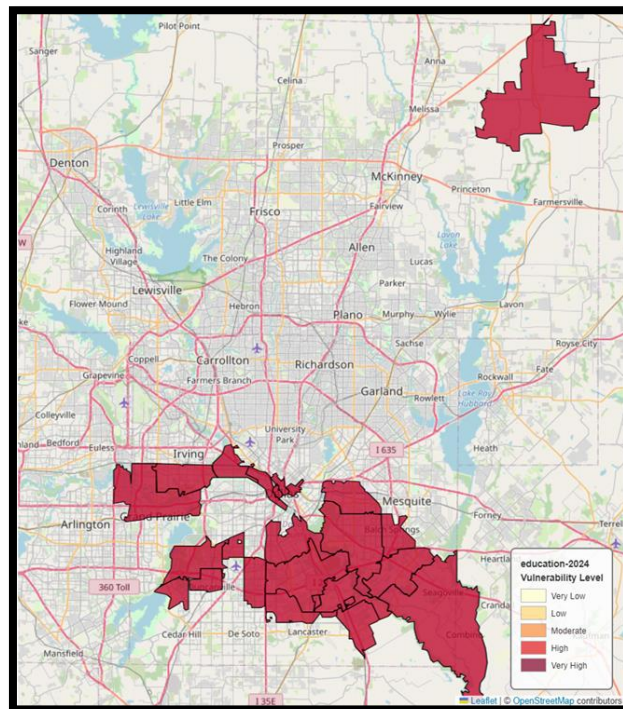
Figure 3: ZIP Codes with Very High Vulnerability for Education Index

Among the five ZIP Codes with very high vulnerability for both education attainment indicators (VH/VH), only one 75159 ZIP Code is designated as UWMD priority area (refer to Table 13 and 14). Notably, Dallas County had the highest number of VH/VH vulnerability ZIP Codes, highlighting the importance of addressing needs throughout the entire UWMD service area.

Comparison Maps: UWMD Service Area ZIP Codes with Very High Vulnerability in Education Index



Year 2023



Year 2024

Figure 4: Maps Showing Year over Year Change with ZIP Codes with Very High Vulnerability in Education Index

NOTE: There has been a shift and change from Rockwall County and North Dallas to the Southeast side of Dallas County

Demographic Characteristics: Race/Ethnicity Personas of the High Priority Geographic Hot Spots

Table 5: Race/Ethnicity Characteristics of High Priority Geographic Areas

Demographic Characteristics	Count of VH ZIP Codes (N=5)	Distribution of Very High/ Very High ZIP Codes	UWMD Service Area Demographic Percentages
Mostly Hispanic or Latino (>50%)	0 (0%)	0% (under-represented)	17%
Mostly Black or African American (>50%)	1 (20%)	20% (over-represented)	8%
Mixed minority (Combined >50% Hispanic/Latino and Black/African American)	4 (80%)	80% (over-represented)	21%
Mostly non-minority (<50% Hispanic/Latino and Black/African American)	0 (0%)	0% (under-represented)	54%

In ZIP Codes with very high vulnerability for both education attainment indicators, mixed minority and African American populations were most prevalent in educational-support-needed neighborhoods, while Hispanic or Latino and non-minorities communities were under-represented.

Root Cause Analysis: Impacts of Social Determinants of Health by Demographic Cluster

Table 6: SDOH Insights from Cross-Cutting Indices for Overlapping Very High Education Attainment ZIP Codes

Demographic Characteristics	# Count of VH ZIP Codes (N=5)	Cross-Cutting Community Indices: Very High Vulnerability Cluster within the Very High/Very High Education Attainment ZIP Codes			
		Equitable Communities (%VH)	Household Essentials (% VH)	Empowered People (% VH)	Access to Vital Services Gap (% VH)
Mostly Hispanic or Latino (>50%)	0	0	0%	0%	0%
Mostly Black or African American (>50%)	1	100%	0%	0%	0%
Mixed minority (Combined >50% Hispanic/Latino and Black/African American)	4	75%	25%	25%	25%
Mostly non-minority (<50% Hispanic/Latino and Black/African American)	0	0%	0%	0%	0%

The table highlights socioeconomic challenges revealed by

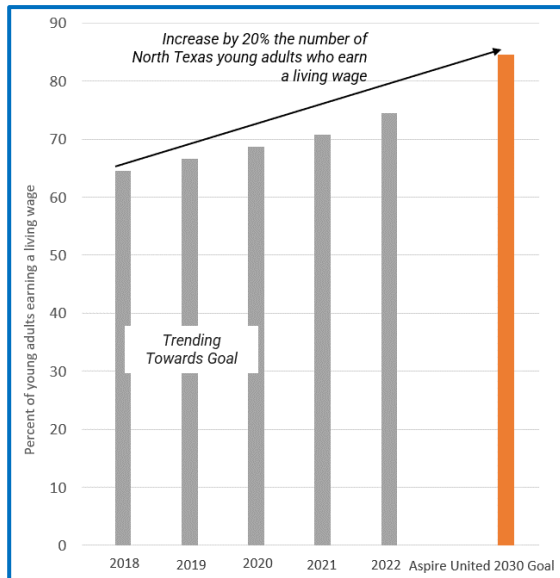
Cross-Cutting Community Indicators and faced by at-risk demographic clusters in meeting educational goals. Mixed minority populations struggle most with socioeconomic burdens, personal empowerment, and access to vital services.

Income

UWMD aims to increase by 20% the number of North Texas young adults earning a living wage, adding nearly \$800 million annually to the economy and significantly enhancing these young Texans' quality of life and future success potential.



Key Measure: Percent of young adults earning a living wage



Young adults in Dallas are earning below the target, with only 74% making a living wage. However, there has been a positive shift, with a 3.7% increase in individuals earning a living wage across the UWMD service area and a 4.4% rise in Dallas County. This progress is encouraging as it aligns with the 1.5% annual growth needed to meet the UWMD Aspire United 2030 goal. Continued focus on improving wages and expanding employment opportunities for young adults is essential to maintain this momentum.

Figure 5: Change Needed in Impact Measure to Achieve the Aspire United 2030 Income Goal

Table 7: Year over Year Change (2019-2022) in Impact Measure for Aspire United 2030 Income Goal

Region	2019		2021			2022		
	Total Householders Earning a living wage (25-44 years)	Percent Population Earning a living wage (\$50K or more)	Total Householders Earning a living wage (25-44 years)	Percent Population Earning a living wage (\$50K or more)	Year over Year % Change	Total Householders Earning a living wage (25-44 years)	Percent Population Earning a living wage (\$50K or more)	Year over Year % Change
Dallas County	228,204	59.92	252,556	64.66	+2.2	271,669	69.03	+4.4
Rockwall County	10,212	87.36	12,007	89.81	+0.6	13,211	90.34	+0.5
Denton County	47,746	74.22	52,212	77.28	+1.9	53,822	79.56	+2.3
Collin County	108,247	80.18	118,821	82.69	+1.5	127,190	85.07	+2.4
North Texas UW service area	394,409	66.63	435,596	70.80	+2.1	465,892	74.51	+3.7
Data Source: ACS 5-Year Estimates (US Census, B19037)								

Income Index: Income Attainment Indicators

- Career preparedness: Career readiness (i.e., SAT/ACT scores)
- Job opportunities: Jobs with benefits and growth occupations

Geographic Hot Spots: ZIP Code Analysis of Areas with Very High Vulnerability for Income Index

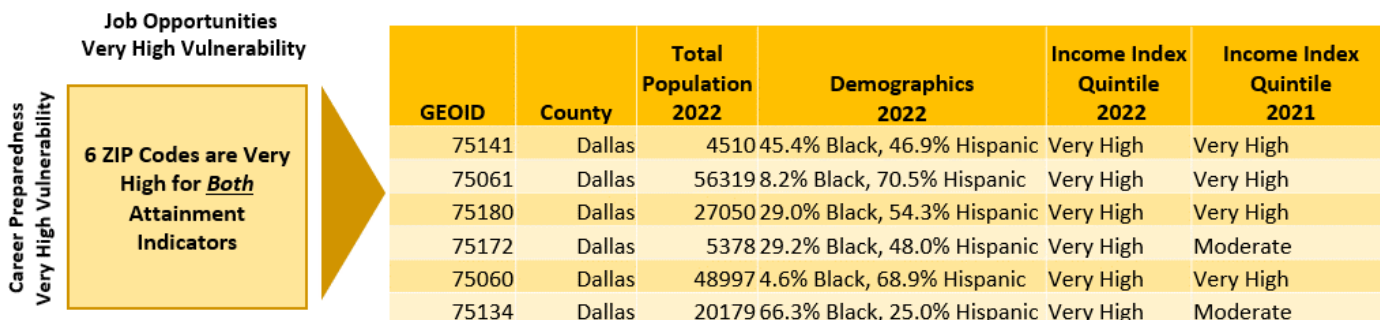


Figure 6: ZIP Codes with Very High Vulnerability for Income Index

Among the six VH/VH ZIP Codes, three are designated UWMD priority areas (see Tables 12 & 13). Notably, all are located in Dallas County, where persistent challenges remain.

Comparison Maps: UWMD Service Area ZIP Codes with Very High Vulnerability in Income Index

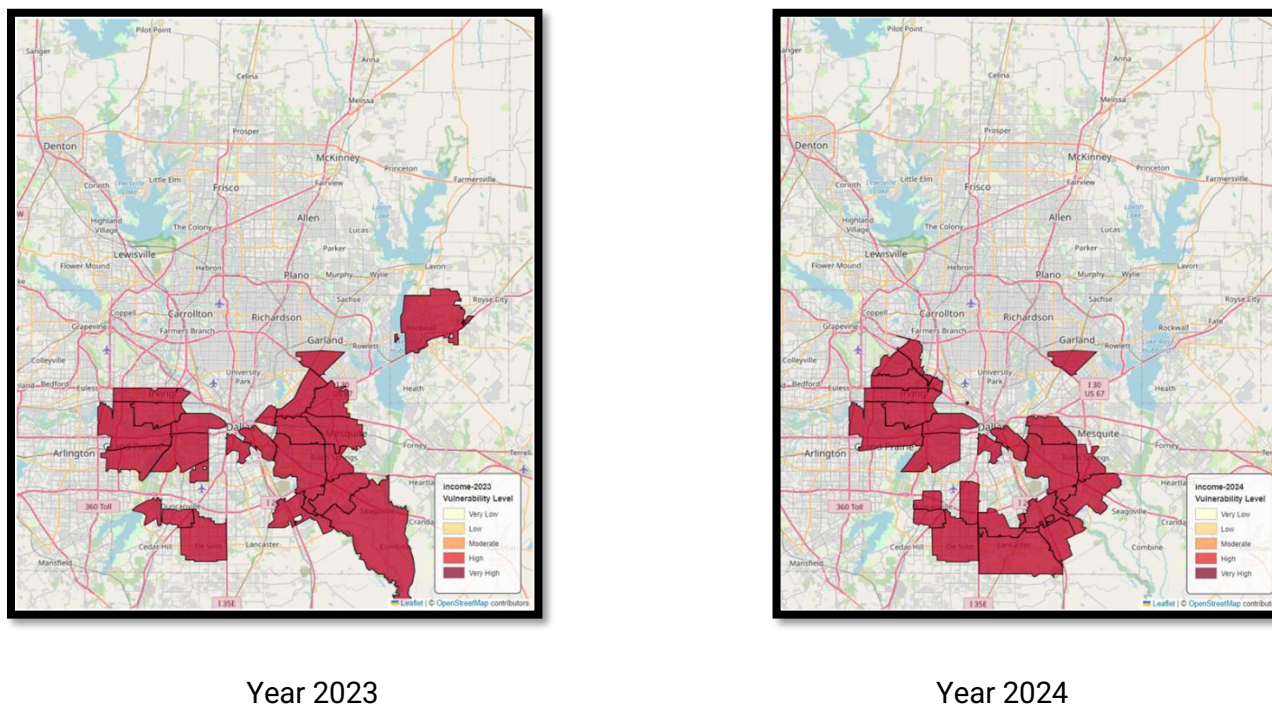


Figure 7: Maps Showing Year over Year Change with ZIP Codes with Very High Vulnerability in Income Index

Table 8: Race/Ethnicity Characteristics of High Priority Geographic Areas

Demographic Characteristics of the Very High/Very High ZIP Codes for Income Attainment Indicators

Demographic Characteristics	Count of VH ZIP Codes (N=6)	Distribution of Very High/Very High ZIP Codes	UWMD Service Area Demographic Percentages
Mostly Hispanic or Latino (>50%)	3	50% (over-represented)	17%
Mostly Black or African American (>50%)	1	17% (over-represented)	8%
Mixed minority (Combined >50% Hispanic/Latino and Black/African American)	2	33% (over-represented)	21%
Mostly non-minority (<50% Hispanic/Latino and Black/African American)	0	0% (under-represented)	54%

In ZIP Codes with very high income vulnerability, Hispanic or Latino and other minority populations were most prevalent in high-income-need neighborhoods, while non-minority communities were under-represented. This highlights a shift in demographic patterns, with Hispanic or Latino populations and other minorities facing the greatest income challenges. A notable shift suggests fewer Black individuals in the most disadvantaged neighborhoods, possibly due to relocation or employment changes.

Root Cause Analysis: Impacts of Social Determinants of Health by Demographic Cluster

Table 9: SDOH Insights from Cross-Cutting Indices for Overlapping Very High Income Attainment ZIP Codes

Cross-Cutting Community Indices: Very High Vulnerability Cluster within the Very High/Very High - Income Attainment ZIP Codes

Demographic Characteristics	# Count of VH ZIP Codes (N=6)	Equitable Communities (% VH)	Household Essentials (% VH)	Empowered People (% VH)	Access to Vital Services Gap (% VH)
Mostly Hispanic or Latino (>50%)	3	33%	66%	66%	0%
Mostly Black or African American (>50%)	1	100%	100%	100%	0%
Mixed minority (Combined >50% Hispanic/Latino and Black/African American)	2	50%	100%	100%	100%
Mostly non-minority (<50% Hispanic/Latino and Black/African American)	0	0%	0%	0%	0%

The table highlights socioeconomic challenges revealed by

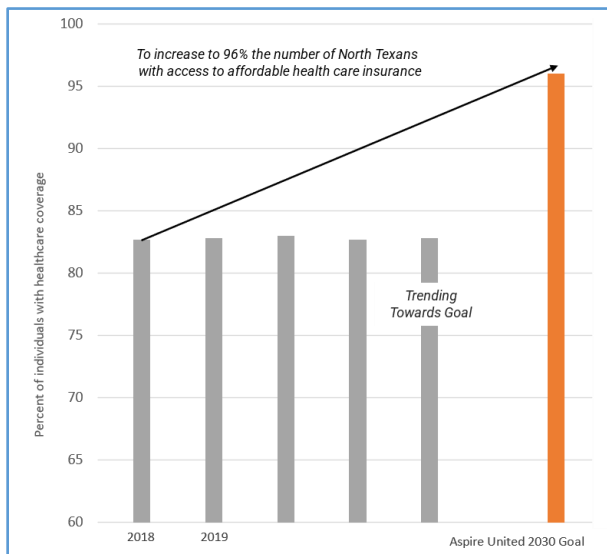
Cross-Cutting Community Indicators and faced by at-risk demographic groups in meeting income goals. Mixed minority populations face the greatest burdens, followed by African Americans, particularly in household essentials and empowered people.

Health

The UWMD bold goal is to increase affordable health insurance access to 96% of North Texans. Greater access can significantly improve health outcomes in areas like hypertension, diabetes, asthma, general health, birth weight, HIV/AIDS, and mental health.



Key Measure: Percentage of individuals with healthcare coverage



Health insurance coverage in the UWMD service area has increased by 0.11%, with Collin County seeing the highest increase at 0.52%, likely due to economic and population growth. However, Dallas County experienced a 0.25% decrease, possibly due to relocation and community needs. Overall coverage stands at 83%, below the 96% target, highlighting the need for continued efforts to improve access to affordable health insurance by more than 2% annually.

Figure 8: Change Needed in Impact Measure to Achieve the Aspire United 2030 Health Goal

Table 10: Year over Year Change (2019-2022) in Impact Measure for Aspire United 2030 Health Goal

Region	2019		2021			2022		
	Total Noninstitutionalized Population	Percentage of Individuals with Healthcare Coverage	Total Noninstitutionalized Population	Percentage of Individuals with Healthcare Coverage	Year-over-Year Percent Change	Total Noninstitutionalized Population	Percentage of Individuals with Healthcare Coverage	Year-over-Year Percent Change
Dallas County	2,588,552	78.99	2,587,485	78.65	-0.5%	2,585,512	78.4	-0.25
Rockwall County	96,467	88.49	104,607	91.18	+0.5%	109,869	91.28	0.1
Denton County	423,998	88.96	430,590	88.84	-0.2%	437,170	89.22	0.38
Collin County	971,106	89.56	1,037,027	89.41	-0.1%	1,075,700	89.93	0.52
North Texas UW service area	4,080,123	82.77	4,159,709	82.70	-0.3%	4,208,251	82.81	0.11
Data Source: ACS 5-Year Estimates (US Census, DP03)								

Health Index: Health Attainment Indicators

- Good Health: Life expectancy and disease burden
- Insurance Affordability: Jobs with benefits and types of insurance

Geographic Hot Spots: ZIP Code Analysis of Areas with Very High Vulnerability for Health Index

Poor Health
Very High Vulnerability

Insurance Affordability
Very High Vulnerability

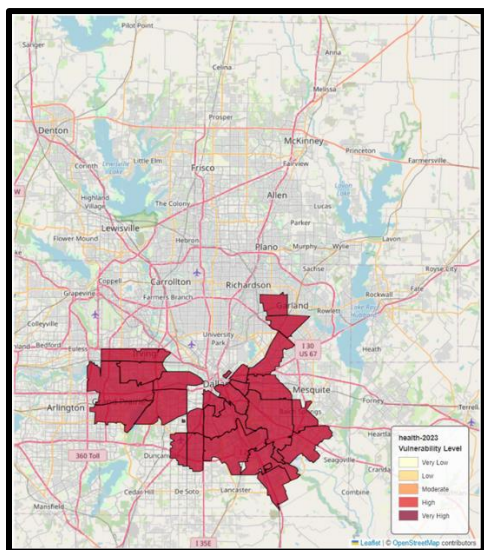
12 ZIP codes are Very High for Both Attainment Indicators

GEOID	County	Total Population 2022	Demographics 2022	Race Persona 2022	Health Index 2022	Health Index Quintile 2022	Health Index Quintile 2021
75215	Dallas	18950	63.7% Black, 22.7% Hispanic	2	1.00	Very High	Very High
75203	Dallas	16265	34.5% Black, 55.5% Hispanic	1	0.94	Very High	Very High
75210	Dallas	8750	52.0% Black, 44.2% Hispanic	2	0.94	Very High	Very High
75217	Dallas	87154	17.8% Black, 75.1% Hispanic	1	0.94	Very High	Very High
75141	Dallas	4510	45.4% Black, 46.9% Hispanic	3	0.90	Very High	Very High
75216	Dallas	55085	50.3% Black, 45.8% Hispanic	2	0.88	Very High	Very High
75253	Dallas	24411	13.4% Black, 69.6% Hispanic	1	0.86	Very High	Very High
75180	Dallas	27050	29.0% Black, 54.3% Hispanic	1	0.86	Very High	Very High
75212	Dallas	27045	25.4% Black, 68.0% Hispanic	1	0.85	Very High	Very High
75172	Dallas	5378	29.2% Black, 48.0% Hispanic	3	0.75	Very High	Very High
75224	Dallas	35903	26.0% Black, 63.7% Hispanic	1	0.70	Very High	Very High
75159	Dallas	22751	14.3% Black, 47.6% Hispanic	3	0.61	High	High

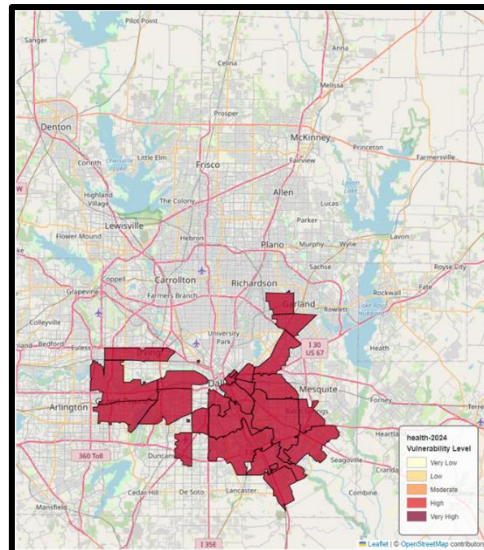
Figure 9: ZIP Codes with Very High Vulnerability for Health Index

Among the 12 VH/VH ZIP Codes, eight are designated UWMD priority areas (see Tables 12 & 13). Notably, all are located in Dallas County, where persistent challenges remain.

Comparison Maps: UWMD Service Area ZIP Codes with Very High Vulnerability in Health Index



Year 2023



Year 2024

Figure 10: Maps Showing Year over Year Change with ZIP Codes with Very High Vulnerability in Health Index

Demographic Characteristics of the Very High/Very High ZIP Codes for Health Attainment Indicators

Table 11: Race/Ethnicity Characteristics of High Priority Geographic Areas

Demographic Characteristics	Count of VH ZIP Codes (N=12)	Distribution of Very High/Very High ZIP Codes	UWMD Service Area Demographic Percentages
Mostly Hispanic or Latino (>50%)	6	50% (over-represented)	17%
Mostly Black or African American (>50%)	3	25% (over-represented)	8%
Mixed minority (Combined >50% Hispanic/Latino and Black/African American)	3	25% (over-represented)	21%
Mostly non-minority (<50% Hispanic/Latino and Black/African American)	0	0% (under-represented)	54%

Hispanic or Latino individuals were notably more prevalent in the most challenging neighborhoods, making up a larger share of the population compared to other racial groups. African American and mixed minority communities were also more likely to reside in these high-risk areas.

Root Cause Analysis: Impacts of Social Determinants of Health by Demographic Cluster

Table 12: SDOH Insights from Cross-Cutting Indices for Overlapping Very High Health Attainment ZIP Codes

Cross-Cutting Community Indices: Very High Vulnerability Cluster within the Very High/Very High Health Attainment ZIP Codes					
Demographic Characteristics	# Count of VH ZIP Codes (N=12)	Equitable Communities (% VH)	Household Essentials (% VH)	Empowered People (% VH)	Access to Vital Services Gap (% VH)
Mostly Hispanic or Latino (>50%)	6	50%	100%	83%	17%
Mostly Black or African American (>50%)	3	100%	100%	100%	0%
Mixed minority (Combined >50% Hispanic/Latino and Black/African American)	3	33%	100%	100%	100%
Mostly non-minority (<50% Hispanic/Latino and Black/African American)	0	0%	0%	0%	0%

The table highlights socioeconomic challenges revealed by

Cross-Cutting Community Indicators and faced by at-risk demographic groups in meeting health goals. Mixed minority populations face the greatest burdens, followed by African Americans, particularly in household essentials and empowered people.

Attainment Indicators: Summarized Findings

UWMD Service Area Education, Income, and Health Domain Attainment Indicators

- ZIP Code 75159 (Seagoville), a UWMD high-priority ZIP Code show high vulnerability in both health and education indexes. Located in Dallas County, this area reflects a critical need to improve educational outcomes and enhance health access.
- ZIP Code 75180 (Balch Springs), a UWMD high-priority ZIP Code, ZIP Code 75172 (Wilmer) and 75141(Hutchins) show high vulnerability in both health and income indexes. Located in Dallas County, both these areas reflect a critical need to raise income levels and enhance health access.
- Educational Disparities: This year, notable disparities in educational attainment are seen between mixed-minority and African American populations. While 20% of ZIP Codes with Very High (VH) education attainment indices belong to African American populations, these areas also show lower vulnerability across broader community indices. In contrast, the remaining 80% of VH ZIP Codes belong to mixed-minority areas, which demonstrate higher vulnerability in various community aspects.
- Income Disparities and Ethnic Imbalances: Income and ethnic disparities persist in the UWMD service area, affecting Hispanic and Black communities disproportionately. Half (50%) of VH ZIP codes in income attainment belong to Hispanic-majority neighborhoods, with mixed-minority and predominantly Black areas representing 33% and 17% of these ZIP Codes, respectively. The areas with high concentrations of mixed-minority and Black residents face heightened vulnerabilities across multiple community indices.
- Health Disparities: Health outcomes show significant ethnic divides within the UWMD service area. Similar to income disparities, 50% of VH vulnerability ZIP Codes in health attainment are concentrated in Hispanic-majority neighborhoods. The remaining 50% is evenly split between Black and mixed-minority communities. These findings underscore the urgent need for targeted health support in the most at-risk areas.

UWMD Service Area High Priority ZIP Codes

For UWMD's assessment of priority ZIP Codes, a two-part method was employed to understand community indices and establish quintile cutoffs.

1) *What is the severity of vulnerability across UWMD high priority ZIP Codes?* The first step involved calculating a Community Indices percentage, averaging the four cross-cutting indices. For a ZIP Code to be considered 'very vulnerable,' its average score needs to be 25% or higher.

2) *Where are the greatest changes in severity comparing last year to this year?* The second step involved comparing changes in vulnerability from the previous year to the current one. This year-over-year analysis shows how needs change across communities.

Table 13: UWMD Service Area High Priority ZIP Codes Year over Year Change, ordered by High to Low

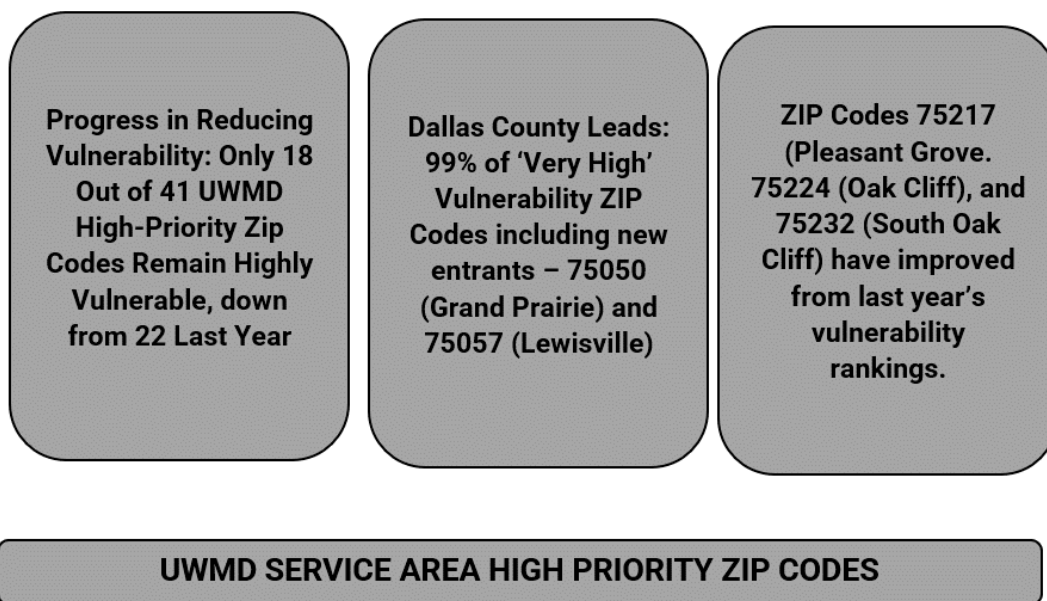
ZIP Code	County	High Priority Zip Code Across All Cross-Cutting Indicators		
		Previous Year	Current Year	% Change
75159	Dallas	75	75	0
75210	Dallas	75	75	0
75215	Dallas	75	75	0
75216	Dallas	75	75	0
75051	Dallas	75	75	0
75203	Dallas	75	75	0
75212	Dallas	75	75	0
75211	Dallas	75	75	0
75134	Dallas	75	75	0
75217	Dallas	75	50	-25
75224	Dallas	75	50	-25
75232	Dallas	75	50	-25
75180	Dallas	50	50	0
75061	Dallas	50	50	0
75041	Dallas	25	25	0
75201	Dallas	25	25	0
75050	Dallas	0	25	25
75057	Southern Denton	0	25	25

*The green highlights represent ZIP Codes that have improved over the past year

*The red highlights represent ZIP Codes that entered the Very high Vulnerability cluster this year.

Table 14: UWMD Service Area High Priority ZIP Codes Not Remaining in Very High Vulnerability Cluster

ZIP Code	County	High Priority Zip Code Across All Cross-Cutting Indicators		
		Previous Year	Current Year	% Change
75220	Dallas	0	0	0
75231	Dallas	0	0	0
75149	Dallas	0	0	0
75243	Dallas	0	0	0
75150	Dallas	0	0	0
75208	Dallas	0	0	0
75069	Collin	0	0	0
75040	Dallas	0	0	0
75043	Dallas	0	0	0
75071	Collin	0	0	0
75067	Southern Denton	0	0	0
75252	Collin	0	0	0
75056	Southern Denton	0	0	0
75104	Dallas	0	0	0
75038	Dallas	0	0	0
75115	Dallas	0	0	0
75032	Rockwall	0	0	0
75075	Collin	0	0	0
75206	Dallas	0	0	0
75007	Southern Denton	0	0	0
75023	Collin	0	0	0
75028	Southern Denton	0	0	0
75087	Rockwall	0	0	0



Cross-Cutting Community Indicators

Each of the cross-cutting community indexes and key findings are described below. While we know that there are specific attainment indicators that directly (and separately) impact education, income, and health (as noted above), there are also more general, cross-cutting community features that serve as critical factors that can influence, impede—or conversely, accelerate—progress across all three Aspire United 2030 focus areas.

Cross-cutting Community Indicators: Summarized Findings

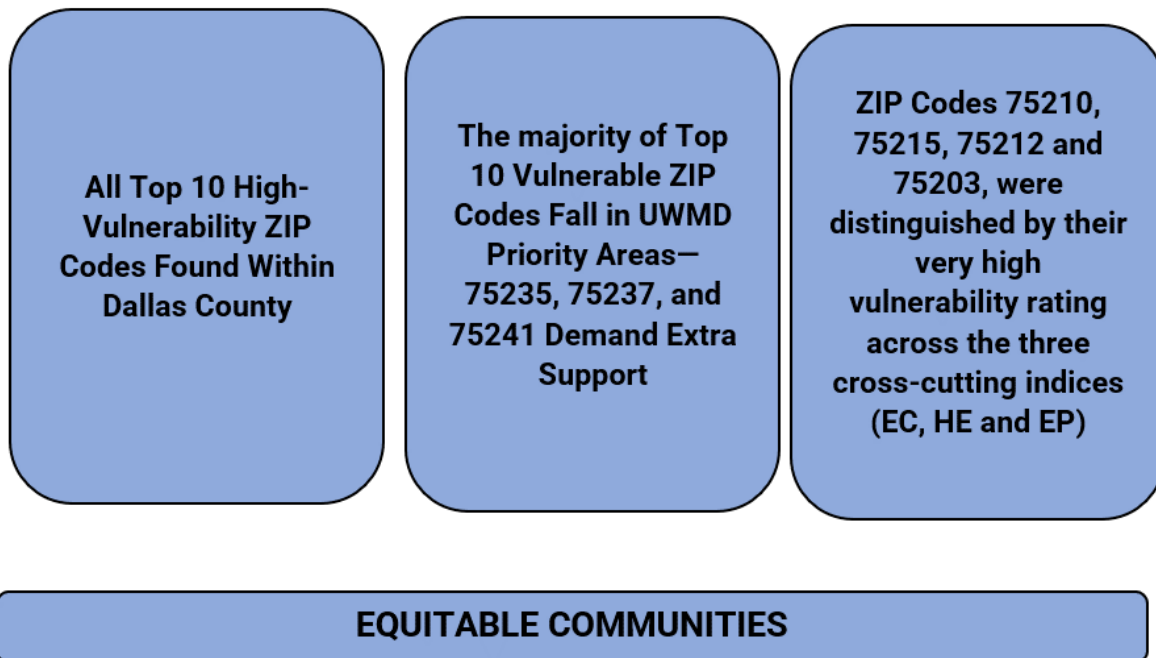
- Within the UWMD service area, Dallas County leads the top ten very high vulnerability ZIP Codes across all community indices, with 100% of these ZIP Codes located in the county.
- Minimal Impact in Collin, South Denton, and Rockwall Counties: Less Than 10% of Neighborhoods Show High Vulnerability – highlighting striking differences in vulnerability levels.
- Different demographic clusters exhibit disproportionate vulnerability across the cross-cutting community indicators:
 - 8% of ZIP Codes in the UWMD service area are predominantly Black or African American demographic. Across all cross-cutting community indices, these neighborhoods are 3.5 times more likely to face challenges accounting to 70% of total Black predominant ZIP Codes.
 - 17% of the ZIP Codes in the UWMD service area are mostly Hispanic or Latino. These neighborhoods are 2.3 to 4.3 times more likely to experience vulnerabilities (33% to 62% of Hispanic dominant ZIP Codes). This community has greater struggles with household essentials and personal empowerment, and less so with equitable communities.
 - 21% of the ZIP Codes in the UWMD service area are categorized as mixed minority. Across various cross-cutting community indices, these neighborhoods are 1-1.8 times more likely to face challenges (15% to 26%)—percentages far lower than the other two demographics above.
 - 54% of the ZIP Codes in the UWMD service area comprise non-minority populations. These areas have far lower vulnerability across all cross-cutting community indices, with indices ranging from less than 0.1 to 0.3 times (1.4% to 4% of total non-minority ZIP codes) lower than all minority-dominated neighborhoods.

Equitable Communities Index

The Equitable Communities (EC) Index represents economic and non-economic factors that underpin stable neighborhoods. Specifically, this index combines indicators outlined in the following table.

Table 15: Equitable Communities Indicators

Indicators Included in the Equitable Communities Index	
Green Space	<ul style="list-style-type: none"> Composite score with (1) the number of parks per 10 households or % of designated park area of a census tract, whichever is greater, (2) transit time to parks, and (3) population density of the area surrounding parks.
Neighborhood Safety	<ul style="list-style-type: none"> Applied Geographic Solution's CrimeRisk® Index is a nationally weighted average crime risk score estimated per census tract.
Affordable Housing Ratio	<ul style="list-style-type: none"> Average monthly housing costs (rent and mortgage) as a percentage of median household income in the past 12 months.
Employment Ratio	<ul style="list-style-type: none"> % of employed individuals out of the civilian labor force between the ages of 16 and 65.



Equitable Communities Top Ten ZIP Codes: Vulnerability Clusters for Other Cross-Cutting Indicators

ZIP Code	County	Total Population	Demographics	Equitable Communities Index Quintile	Household Essentials Index Quintile	Empowered People Index Quintile	Access Vital Services GAP Analysis Quintile
75235	Dallas	18,936	14.5% Black, 46.5% Hispanic	VH+	VH+	H	M
75210	Dallas	8,750	52.0% Black, 44.2% Hispanic	VH+	VH+	VH+	M
75237	Dallas	19,530	79.2% Black, 18.0% Hispanic	VH+	VH	VH	H
75241	Dallas	33,081	65.9% Black, 26.2% Hispanic	VH+	VH+	VH	H
75051	Dallas	40,166	12.7% Black, 69.7% Hispanic	VH+	VH	VH	H
75215	Dallas	18,950	63.7% Black, 22.7% Hispanic	VH+	VH+	VH+	M
75134	Dallas	20,179	66.3% Black, 25.0% Hispanic	VH+	VH	VH+	H
75211	Dallas	73,948	9.3% Black, 78.6% Hispanic	VH+	VH	VH	H
75212	Dallas	27,045	25.4% Black, 68.0% Hispanic	VH+	VH+	VH+	M
75203	Dallas	16,265	34.5% Black, 55.5% Hispanic	VH+	VH+	VH+	M

*Disclaimer: Grey cells are UWM High Priority ZIP Codes

Table 16: A Look at EC Top Ten VH Vulnerability ZIP Codes and Vulnerability Across the Other Cross-Cutting Indicators

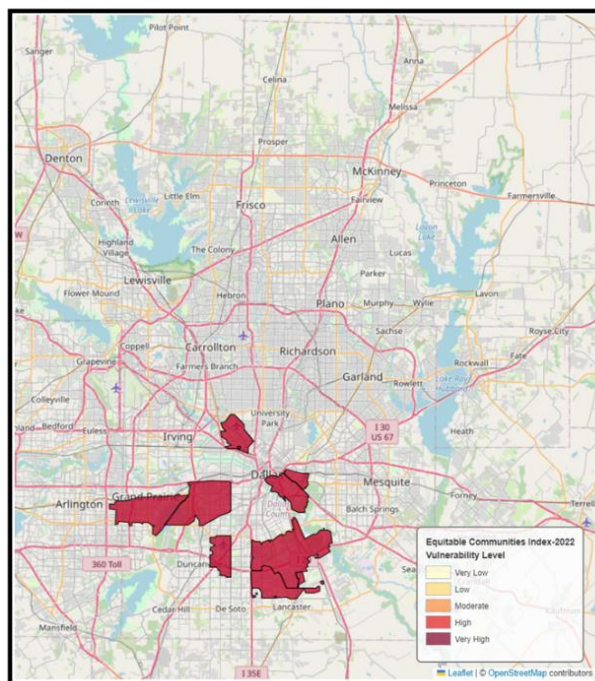


Figure 11: Detailed Map of the Top Ten Very High Vulnerability ZIP Codes for Equitable Communities Index

The table provides a detailed comparison of the top ten ZIP Codes based on the Equitable Communities Index, alongside the same classifications in the other three indices. Most of these ZIP Codes are notably classified as very high in both the Household Essentials and Empowered People indices.

This alignment across multiple indices indicates significant opportunities for targeted and impactful interventions. In particular, ZIP Codes 75210, 75215, 75212, and 75203 were distinguished by their very high vulnerability (VH+) rating across the three major community indices, while also being ranked within the top ten, suggesting a critical area for focused efforts.

Demographic Characteristics: Distribution of Race/Ethnicity Personas Within EC Vulnerability

Table 17: Distribution of Race/Ethnicity Within EC Very High Vulnerability Cluster

Demographic Clusters	Count of Very High ZIP Codes		VH Vulnerability Likelihood
	Actual Distribution	Expected Distribution	
Mostly Hispanic or Latino (>50%)	7.0 (33.3%)	3 (17%)	2.3
Mostly Black or African American (>50%)	7.0 (70.0%)	2 (8%)	3.5
Mixed minority (Combined >50% Hispanic/Latino and Black/African American)	7.0 (25.9%)	4 (21%)	1.75
Mostly non-minority (<50% Hispanic/Latino and Black/African American)	4.0 (5.8%)	14 (54%)	0.3
Chi-square test & statistical significance	p<0.001 is very significant between demographic clusters and Equitable Communities Index's very high vulnerability quintile		

The table reveals that minority communities, particularly Hispanic/Latino and Black/African American neighborhoods, are facing significantly higher levels of vulnerability than expected, with some areas showing vulnerability rates up to three times higher. In contrast, non-minority neighborhoods experience much lower vulnerability than anticipated.

This disparity highlights the urgent need for targeted efforts to address the higher vulnerability in minority communities, which are disproportionately impacted in areas like health, income, and education.

Household Essentials Index

The Household Essentials (HE) Index represents economic and non-economic factors that underpin stable households. Specifically, this index combines indicators outlined in the following table.

Table 18: Household Essentials Indicators

Indicators Included in the Household Essentials Index	
Household Income	<ul style="list-style-type: none"> Median household income in the past 12 months (\$)
Paycheck Predictability	<ul style="list-style-type: none"> % of population working full-time, year-round in the past 12 months for the population between the ages of 16 and 65.
Earning Potential (Household Structure)	<ul style="list-style-type: none"> % of households with zero wage earners
Food Insecurity	<ul style="list-style-type: none"> % of households receiving Supplemental Nutrition Assistance Program (SNAP, formerly food stamps) in the past 12 months
Health Insurance Coverage	<ul style="list-style-type: none"> % uninsured population per census tract

All Top 10 ZIP Codes with very high vulnerability are located within Dallas County.

Most of the top ten vulnerable ZIP Codes fall within UWMD's priority areas, with ZIP Codes 75141, 75241, 75235, and 75172 needing extra focus and resources

ZIP Codes 75210, 75203, and 75172 stand out with a very high vulnerability (VH+) rating across all three cross-cutting indices (EC, HE and EP)

HOUSEHOLD ESSENTIALS

Household Essentials Top Ten ZIP Codes: Vulnerability Clusters for Other Cross-Cutting Indicators

Table 19: A Look at HE Top Ten VH Vulnerability ZIP Codes and Vulnerability Across the Other Cross-Cutting Indicators

ZIP Code	County	Total Population	Demographics	Household Essentials Index Quintile	Empowered People Index Quintile	Equitable Communities Index Quintile	Access Vital Services GAP Analysis Quintile
75210	Dallas	8,750	52.0% Black, 44.2% Hispanic	VH+	VH+	VH+	M
75216	Dallas	55,085	50.3% Black, 45.8% Hispanic	VH+	VH+	VH	H
75141	Dallas	4,510	45.4% Black, 46.9% Hispanic	VH+	VH+	H	VH
75217	Dallas	87,154	17.8% Black, 75.1% Hispanic	VH+	VH+	H	H
75215	Dallas	18,950	63.7% Black, 22.7% Hispanic	VH+	VH+	VH+	M
75241	Dallas	33,081	65.9% Black, 26.2% Hispanic	VH+	VH	VH+	H
75235	Dallas	18,936	14.5% Black, 46.5% Hispanic	VH+	H	VH+	M
75203	Dallas	16,265	34.5% Black, 55.5% Hispanic	VH+	VH+	VH+	M
75212	Dallas	27,045	25.4% Black, 68.0% Hispanic	VH+	VH+	VH+	M
75172	Dallas	5,378	29.2% Black, 48.0% Hispanic	VH+	VH+	VH	VH

*Disclaimer: Grey cells are UWMD High Priority ZIP Codes

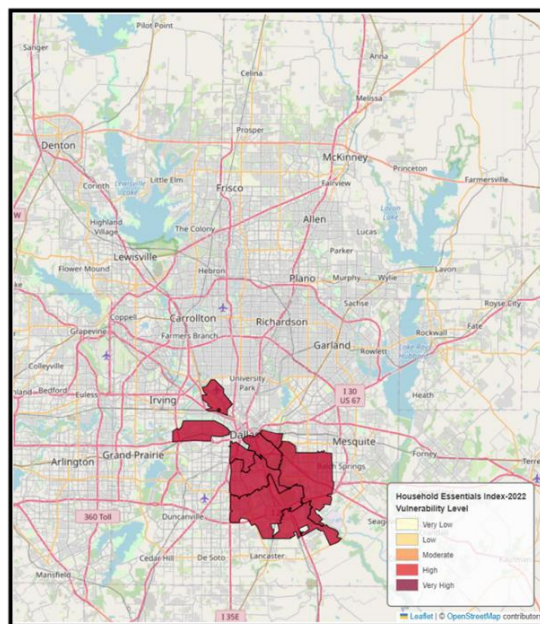


Figure 12: Detailed Map of the Top Ten Very High Vulnerability ZIP Codes for Household Essentials Index

In the Household Essentials Index, most ZIP Codes classified as very high were also ranked in the top ten for the Empowered People indices. These overlapping classifications indicate significant potential for targeted and impactful initiatives. The consistent alignment across multiple indices suggests that focused efforts in these areas could lead to considerable positive outcomes.

In particular, ZIP Codes 75210, 75215, and 75212, stood out for their very high vulnerability (VH+) classification in all three indices of Household Essentials, Empowered People, and Equitable Communities indices, highlighting them as critical areas for intervention.

Demographic Characteristics: Distribution of Race/Ethnicity Personas Within HE Vulnerability

Table 20: Distribution of Race/Ethnicity Within HE Very High Vulnerability Cluster

Demographic Clusters	Count of Very High ZIP Codes		VH Vulnerability Likelihood
	Actual Distribution	Expected Distribution	
Mostly Hispanic or Latino (>50%)	12.0 (57.1%)	3 (17%)	4
Mostly Black or African American (>50%)	7.0 (70.0%)	2 (8%)	3.5
Mixed minority (Combined >50% Hispanic/Latino and Black/African American)	5.0 (18.5%)	4 (21%)	1.25
Mostly non-minority (<50% Hispanic/Latino and Black/African American)	1.0 (1.4%)	14 (54%)	<0.1
Chi-square test & statistical significance	p<0.001 is very significant between demographic clusters and Household Essentials Index's very high vulnerability quintile		

The table reveals that minority communities, particularly Hispanic/Latino and Black/African American neighborhoods, are experiencing significantly higher levels of vulnerability than expected, with some areas showing vulnerability rates up to four times higher. Hispanic/Latino and Black/African American neighborhoods show much higher rates of vulnerability, while mixed minority neighborhoods also face elevated levels, though to a lesser extent.

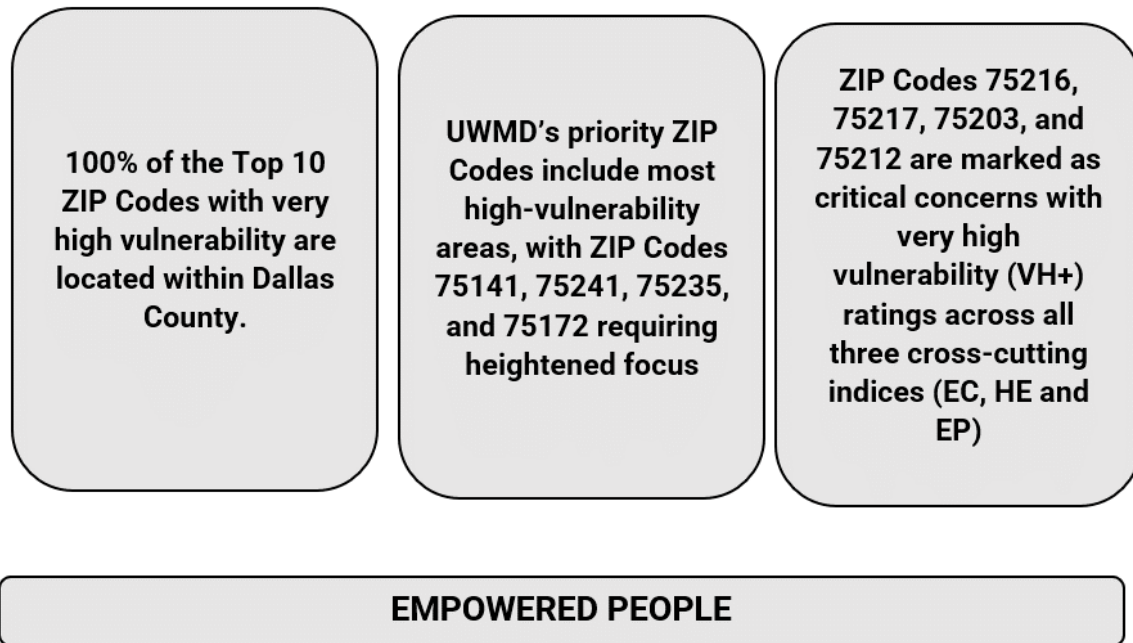
In contrast, non-minority neighborhoods experience much lower vulnerability than anticipated. This disparity highlights the urgent need for targeted efforts to address the higher vulnerability in minority communities, which are disproportionately impacted in areas like health, income, and education.

Empowered People Index

The Empowered People Index represents economic and non-economic factors that underpin a person's ability to achieve their greatest potential. Specifically, this index combines indicators outlined in the following table.

Table 21: Empowered People Indicators

Indicators Included in the Empowered People Index	
Educational Attainment	<ul style="list-style-type: none"> • % of population, ages 25 and over, with a high-school degree
Literacy	<ul style="list-style-type: none"> • % of residents with low literacy
EPA National Walkability Index	<ul style="list-style-type: none"> • Score based on routes to nearby amenities and pedestrian friendliness
Vehicle Access	<ul style="list-style-type: none"> • % of households without a vehicle
Internet Access	<ul style="list-style-type: none"> • % of households without an internet subscription



Empowered People Top Ten ZIP Codes: Vulnerability Clusters for Other Cross-Cutting Indicators

Table 22: A Look at EP Top Ten VH Vulnerability ZIP Codes and Vulnerability Across the Other Cross-Cutting Indicators

ZIP Code	County	Total Population	Demographics	Empowered People Index Quintile	Household Essentials Index Quintile	Equitable Communities Index Quintile	Access Vital Services GAP Analysis Quintile
75210	Dallas	8,750	52.0% Black, 44.2% Hispanic	VH+	VH+	VH	VH
75216	Dallas	55,085	50.3% Black, 45.8% Hispanic	VH+	VH+	VH+	M
75141	Dallas	4,510	45.4% Black, 46.9% Hispanic	VH+	VH	VH	H
75217	Dallas	87,154	17.8% Black, 75.1% Hispanic	VH+	VH+	VH+	M
75215	Dallas	18,950	63.7% Black, 22.7% Hispanic	VH+	VH+	H	H
75241	Dallas	33,081	65.9% Black, 26.2% Hispanic	VH+	VH+	H	VH
75235	Dallas	18,936	14.5% Black, 46.5% Hispanic	VH+	VH	VH+	H
75203	Dallas	16,265	34.5% Black, 55.5% Hispanic	VH+	VH+	VH+	M
75212	Dallas	27,045	25.4% Black, 68.0% Hispanic	VH+	VH+	VH+	M
75172	Dallas	5,378	29.2% Black, 48.0% Hispanic	VH+	VH	H	VH

*Disclaimer: Grey cells are UWMD High Priority ZIP Codes

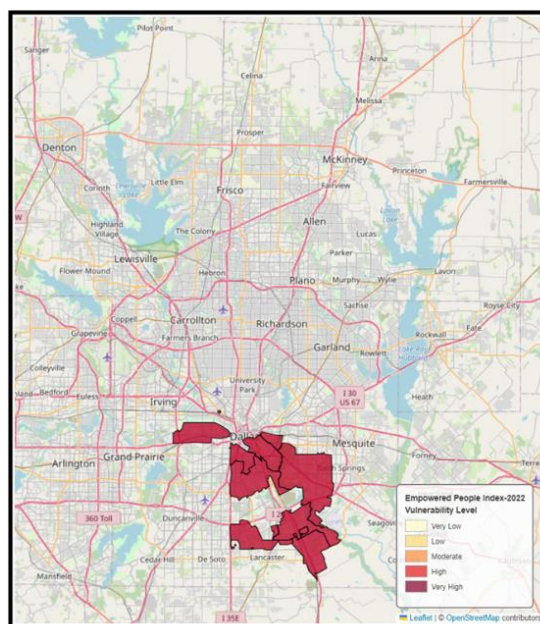


Figure 13: Detailed Map of the Top Ten Very High Vulnerability ZIP Codes for Empowered People Index

In the Empowered People Index, ZIP Codes ranked very high were also very high or high in both Household Essentials and Equitable Communities. This grouping indicates prime spots for focused community efforts and significant projects.

Their consistent high ranking across various indices suggests that dedicated work in these zones could bring meaningful improvements. Specifically, ZIP Codes 75216, 75217, 75203, and 75212 stood out for their very high vulnerability (VH+) rating in all three indices of Household Essentials, Empowered People, and Equitable Communities indices, marking them as crucial areas for targeted support.

Demographic Characteristics: Distribution of Race/Ethnicity Personas Within EP Vulnerability

Table 23: Distribution of Race/Ethnicity Within EP Very High Vulnerability Cluster

Demographic Clusters	Count of Very High ZIP Codes		VH Vulnerability Likelihood
	Actual Distribution	Expected Distribution	
Mostly Hispanic or Latino (>50%)	13.0 (61.9%)	3 (17%)	4.3
Mostly Black or African American (>50%)	7.0 (70.0%)	2 (8%)	3.5
Mixed minority (Combined >50% Hispanic/Latino and Black/African American)	4.0 (14.8%)	4 (21%)	1
Mostly non-minority (<50% Hispanic/Latino and Black/African American)	1.0 (1.4%)	14 (54%)	<0.1
Chi-square test & statistical significance	p<0.001 is very significant between demographic clusters and Empowered People Index's very high vulnerability quintile		

The table highlights significant disparities in vulnerability between different community groups. Minority neighborhoods, particularly those with high Hispanic/Latino and Black/African American populations, face substantially higher vulnerability levels than anticipated. Hispanic/Latino neighborhoods, in particular, show a markedly elevated likelihood of very high vulnerability, while Black/African American communities also experience a notable increase.

In contrast, the expected rates of very high vulnerability across these areas are much lower, underscoring the disproportionate impact on minority neighborhoods. This data emphasizes the urgent need for targeted interventions to address the elevated vulnerabilities in these communities, especially in critical areas such as health, education, and income.