



HEALTH / *Paving the ROAD to better* HEALTH

United Way of Metropolitan Dallas

10 YEAR GOAL / Our community's progress



Improve Community Health across the Region by

INCREASING THE NUMBER OF INDIVIDUALS ACCESSING CARE
children and adults

DEVELOPING HEALTHY MOMS AND BABIES
for the first 6 years of life

**PREVENTING OBESITY
REDUCING SUBSTANCE ABUSE
ELIMINATING DOMESTIC VIOLENCE**

PROGRESS / Since 2011, United Way has invested \$16.7 million



Expanded access to healthcare to **332,000**

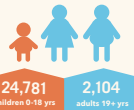


Helped over **26,000** people get on the path to a healthier weight

Helped over **11,000** children through prenatal care and well-child visits



Helped over **100,000** women, children, and seniors feel safer in their homes and communities



94% of infants and toddlers participating in the YW Nurse-Family Partnership are current on immunizations.

Helped almost **13,000** people achieve sobriety



UW's Healthy Zone School program, in partnership with the Cooper Institute® gave schools the resources to engage teachers, students, and parents to improve the health of their local communities. HZS reached **18,105** students across **32** schools and 11 school districts.

NEED / Across our local communities

The total cost of uncompensated care for hospitals

\$3.3 Billion



FAMILY VIOLENCE of Texas women have experienced family violence in their lifetime

38%

of children of abused women are also physically abused

70%



PRENATAL CARE of women in Dallas County receive no prenatal care in their first trimester of pregnancy

44%



OBESITY of children are obese or at risk aged 10 to 17

35.7%

United Way of Metropolitan Dallas needs your help

HOW WILL you GET INVOLVED?



GIVE

When you give to the United Way, the whole community gets to keep the change!



ADVOCATE

Speak out. Your community needs you. Have a conversation with someone today about how United Way is creating lasting change in our communities.



VOLUNTEER

Change won't happen without you. Become a volunteer mentor, reader or tutor today!

Bringing people together / to improve lives and create lasting change in North Texas

For more info, visit UnitedWayDallas.org/scorecard

Health Sources:

1. Texas Department of State Health Services 2012 Report on Charity Care Charges, and Selected Financial Data for Texas Acute Care Hospitals.
2. National Survey of Children's Health, 2007
3. Children's 2013 Beyond ABC Report

1

3

2